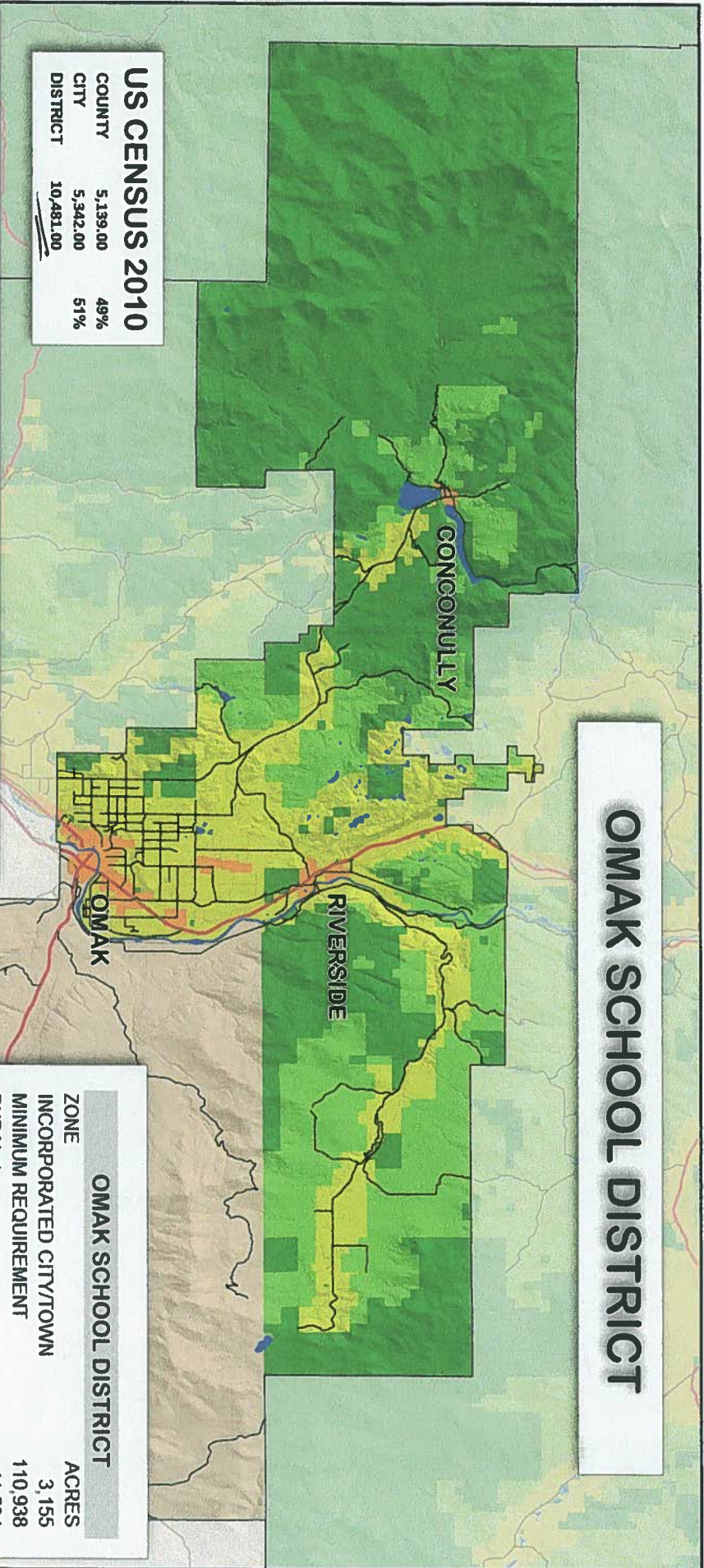
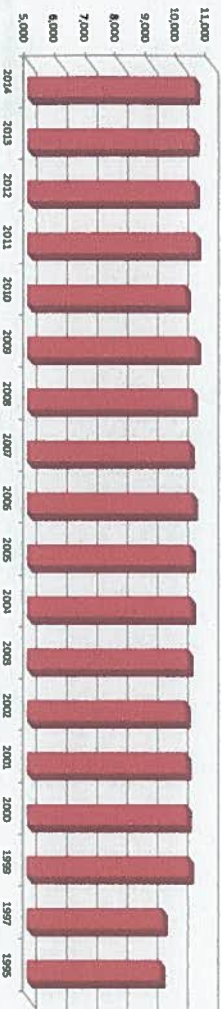


OMAK SCHOOL DISTRICT



US CENSUS 2010
 COUNTY 5,139,000 49%
 CITY 5,342,000 51%
 DISTRICT 10,481,000

CURRENT POPULATION ESTIMATE 10,525 *Current*
US CENSUS ESTIMATED POPULATION CHANGE 1995 TO 2014



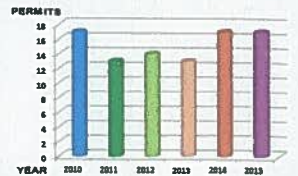
2/23/16

OMAK SCHOOL DISTRICT	
ZONE	ACRES
INCORPORATED CITY/TOWN	3,155
MINIMUM REQUIREMENT	110,938
RURAL 1	41,534
RURAL 20	120,105
RURAL 5	41,910
UPLANDS 20	23

OKANOGAN COUNTY ZONING - DRAFT - 10/16/2016	
SYMBOL, CODE, ZONE	SYMBOL, CODE, ZONE
AD AIRPORT DEVELOPMENT	HRD VP 5 VALLEY FLOOR
AR AGRICULTURAL RESIDENTIAL	HRD VP 6 VALLEY FLOOR
C COMMERCIAL	HRD VP 7 VALLEY FLOOR
CI CITY/TOWN, INCORPORATED CITY/TOWN	HRD VP 8 VALLEY FLOOR
I INDUSTRIAL	HRD VP 9 VALLEY FLOOR
LD LOW DENSITY RESIDENTIAL	HRD VP 10 VALLEY FLOOR
LDH LOW DENSITY COMPLETELY PLANNED AREA	HRD VP 11 VALLEY FLOOR
MR MINIMUM REQUIREMENT	HRD VP 12 VALLEY FLOOR
HRD UL 20 UPLANDS 20	HRD VP 13 VALLEY FLOOR
HRD VP 1 METHUEN REVIEW DISTRICT	HRD VP 14 VALLEY FLOOR
HRD VP 12,500 METHUEN REVIEW DISTRICT	HRD VP 15 VALLEY FLOOR
HRD VP 13,500 METHUEN REVIEW DISTRICT	HRD VP 16 VALLEY FLOOR
HRD VP 14,500 METHUEN REVIEW DISTRICT	HRD VP 17 VALLEY FLOOR
HRD VP 15,500 METHUEN REVIEW DISTRICT	HRD VP 18 VALLEY FLOOR
HRD VP 16,500 METHUEN REVIEW DISTRICT	HRD VP 19 VALLEY FLOOR
HRD VP 17,500 METHUEN REVIEW DISTRICT	HRD VP 20 VALLEY FLOOR
HRD VP 18,500 METHUEN REVIEW DISTRICT	HRD VP 21 VALLEY FLOOR
HRD VP 19,500 METHUEN REVIEW DISTRICT	HRD VP 22 VALLEY FLOOR
HRD VP 20,500 METHUEN REVIEW DISTRICT	HRD VP 23 VALLEY FLOOR
HRD VP 21,500 METHUEN REVIEW DISTRICT	HRD VP 24 VALLEY FLOOR
HRD VP 22,500 METHUEN REVIEW DISTRICT	HRD VP 25 VALLEY FLOOR
HRD VP 23,500 METHUEN REVIEW DISTRICT	HRD VP 26 VALLEY FLOOR
HRD VP 24,500 METHUEN REVIEW DISTRICT	HRD VP 27 VALLEY FLOOR
HRD VP 25,500 METHUEN REVIEW DISTRICT	HRD VP 28 VALLEY FLOOR
HRD VP 26,500 METHUEN REVIEW DISTRICT	HRD VP 29 VALLEY FLOOR
HRD VP 27,500 METHUEN REVIEW DISTRICT	HRD VP 30 VALLEY FLOOR
HRD VP 28,500 METHUEN REVIEW DISTRICT	HRD VP 31 VALLEY FLOOR
HRD VP 29,500 METHUEN REVIEW DISTRICT	HRD VP 32 VALLEY FLOOR
HRD VP 30,500 METHUEN REVIEW DISTRICT	HRD VP 33 VALLEY FLOOR
HRD VP 31,500 METHUEN REVIEW DISTRICT	HRD VP 34 VALLEY FLOOR
HRD VP 32,500 METHUEN REVIEW DISTRICT	HRD VP 35 VALLEY FLOOR
HRD VP 33,500 METHUEN REVIEW DISTRICT	HRD VP 36 VALLEY FLOOR
HRD VP 34,500 METHUEN REVIEW DISTRICT	HRD VP 37 VALLEY FLOOR
HRD VP 35,500 METHUEN REVIEW DISTRICT	HRD VP 38 VALLEY FLOOR
HRD VP 36,500 METHUEN REVIEW DISTRICT	HRD VP 39 VALLEY FLOOR
HRD VP 37,500 METHUEN REVIEW DISTRICT	HRD VP 40 VALLEY FLOOR
HRD VP 38,500 METHUEN REVIEW DISTRICT	HRD VP 41 VALLEY FLOOR
HRD VP 39,500 METHUEN REVIEW DISTRICT	HRD VP 42 VALLEY FLOOR
HRD VP 40,500 METHUEN REVIEW DISTRICT	HRD VP 43 VALLEY FLOOR
HRD VP 41,500 METHUEN REVIEW DISTRICT	HRD VP 44 VALLEY FLOOR
HRD VP 42,500 METHUEN REVIEW DISTRICT	HRD VP 45 VALLEY FLOOR
HRD VP 43,500 METHUEN REVIEW DISTRICT	HRD VP 46 VALLEY FLOOR
HRD VP 44,500 METHUEN REVIEW DISTRICT	HRD VP 47 VALLEY FLOOR
HRD VP 45,500 METHUEN REVIEW DISTRICT	HRD VP 48 VALLEY FLOOR
HRD VP 46,500 METHUEN REVIEW DISTRICT	HRD VP 49 VALLEY FLOOR
HRD VP 47,500 METHUEN REVIEW DISTRICT	HRD VP 50 VALLEY FLOOR
HRD VP 48,500 METHUEN REVIEW DISTRICT	HRD VP 51 VALLEY FLOOR
HRD VP 49,500 METHUEN REVIEW DISTRICT	HRD VP 52 VALLEY FLOOR
HRD VP 50,500 METHUEN REVIEW DISTRICT	HRD VP 53 VALLEY FLOOR
HRD VP 51,500 METHUEN REVIEW DISTRICT	HRD VP 54 VALLEY FLOOR
HRD VP 52,500 METHUEN REVIEW DISTRICT	HRD VP 55 VALLEY FLOOR
HRD VP 53,500 METHUEN REVIEW DISTRICT	HRD VP 56 VALLEY FLOOR
HRD VP 54,500 METHUEN REVIEW DISTRICT	HRD VP 57 VALLEY FLOOR
HRD VP 55,500 METHUEN REVIEW DISTRICT	HRD VP 58 VALLEY FLOOR
HRD VP 56,500 METHUEN REVIEW DISTRICT	HRD VP 59 VALLEY FLOOR
HRD VP 57,500 METHUEN REVIEW DISTRICT	HRD VP 60 VALLEY FLOOR
HRD VP 58,500 METHUEN REVIEW DISTRICT	HRD VP 61 VALLEY FLOOR
HRD VP 59,500 METHUEN REVIEW DISTRICT	HRD VP 62 VALLEY FLOOR
HRD VP 60,500 METHUEN REVIEW DISTRICT	HRD VP 63 VALLEY FLOOR
HRD VP 61,500 METHUEN REVIEW DISTRICT	HRD VP 64 VALLEY FLOOR
HRD VP 62,500 METHUEN REVIEW DISTRICT	HRD VP 65 VALLEY FLOOR
HRD VP 63,500 METHUEN REVIEW DISTRICT	HRD VP 66 VALLEY FLOOR
HRD VP 64,500 METHUEN REVIEW DISTRICT	HRD VP 67 VALLEY FLOOR
HRD VP 65,500 METHUEN REVIEW DISTRICT	HRD VP 68 VALLEY FLOOR
HRD VP 66,500 METHUEN REVIEW DISTRICT	HRD VP 69 VALLEY FLOOR
HRD VP 67,500 METHUEN REVIEW DISTRICT	HRD VP 70 VALLEY FLOOR
HRD VP 68,500 METHUEN REVIEW DISTRICT	HRD VP 71 VALLEY FLOOR
HRD VP 69,500 METHUEN REVIEW DISTRICT	HRD VP 72 VALLEY FLOOR
HRD VP 70,500 METHUEN REVIEW DISTRICT	HRD VP 73 VALLEY FLOOR
HRD VP 71,500 METHUEN REVIEW DISTRICT	HRD VP 74 VALLEY FLOOR
HRD VP 72,500 METHUEN REVIEW DISTRICT	HRD VP 75 VALLEY FLOOR
HRD VP 73,500 METHUEN REVIEW DISTRICT	HRD VP 76 VALLEY FLOOR
HRD VP 74,500 METHUEN REVIEW DISTRICT	HRD VP 77 VALLEY FLOOR
HRD VP 75,500 METHUEN REVIEW DISTRICT	HRD VP 78 VALLEY FLOOR
HRD VP 76,500 METHUEN REVIEW DISTRICT	HRD VP 79 VALLEY FLOOR
HRD VP 77,500 METHUEN REVIEW DISTRICT	HRD VP 80 VALLEY FLOOR
HRD VP 78,500 METHUEN REVIEW DISTRICT	HRD VP 81 VALLEY FLOOR
HRD VP 79,500 METHUEN REVIEW DISTRICT	HRD VP 82 VALLEY FLOOR
HRD VP 80,500 METHUEN REVIEW DISTRICT	HRD VP 83 VALLEY FLOOR
HRD VP 81,500 METHUEN REVIEW DISTRICT	HRD VP 84 VALLEY FLOOR
HRD VP 82,500 METHUEN REVIEW DISTRICT	HRD VP 85 VALLEY FLOOR
HRD VP 83,500 METHUEN REVIEW DISTRICT	HRD VP 86 VALLEY FLOOR
HRD VP 84,500 METHUEN REVIEW DISTRICT	HRD VP 87 VALLEY FLOOR
HRD VP 85,500 METHUEN REVIEW DISTRICT	HRD VP 88 VALLEY FLOOR
HRD VP 86,500 METHUEN REVIEW DISTRICT	HRD VP 89 VALLEY FLOOR
HRD VP 87,500 METHUEN REVIEW DISTRICT	HRD VP 90 VALLEY FLOOR
HRD VP 88,500 METHUEN REVIEW DISTRICT	HRD VP 91 VALLEY FLOOR
HRD VP 89,500 METHUEN REVIEW DISTRICT	HRD VP 92 VALLEY FLOOR
HRD VP 90,500 METHUEN REVIEW DISTRICT	HRD VP 93 VALLEY FLOOR
HRD VP 91,500 METHUEN REVIEW DISTRICT	HRD VP 94 VALLEY FLOOR
HRD VP 92,500 METHUEN REVIEW DISTRICT	HRD VP 95 VALLEY FLOOR
HRD VP 93,500 METHUEN REVIEW DISTRICT	HRD VP 96 VALLEY FLOOR
HRD VP 94,500 METHUEN REVIEW DISTRICT	HRD VP 97 VALLEY FLOOR
HRD VP 95,500 METHUEN REVIEW DISTRICT	HRD VP 98 VALLEY FLOOR
HRD VP 96,500 METHUEN REVIEW DISTRICT	HRD VP 99 VALLEY FLOOR
HRD VP 97,500 METHUEN REVIEW DISTRICT	HRD VP 100 VALLEY FLOOR

OMAK SCHOOL DISTRICT

BUILDING PERMITS 2010 TO 2015

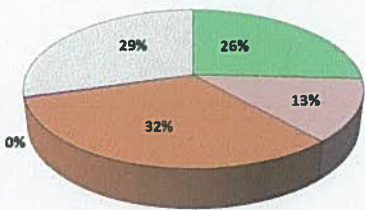


CONCONULLY

RIVERSIDE

OMAK

OMAK SCHOOL DISTRICT OWNERSHIP



FEDERAL	81,344
STATE	40,501
TRIBAL	101,239
LOCAL	879
PRIVATE	92,912