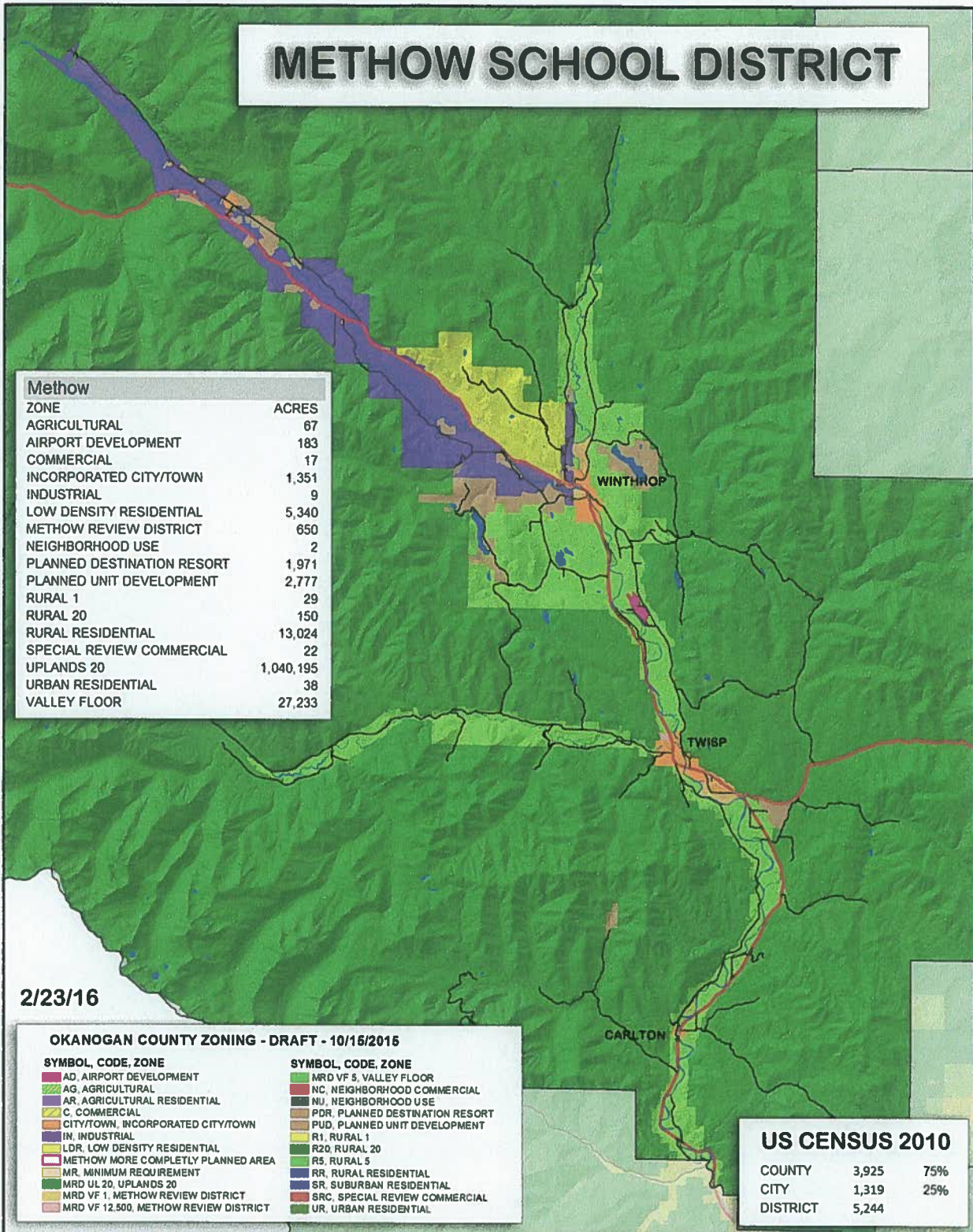


METHOW SCHOOL DISTRICT



Methow	
ZONE	ACRES
AGRICULTURAL	67
AIRPORT DEVELOPMENT	183
COMMERCIAL	17
INCORPORATED CITY/TOWN	1,351
INDUSTRIAL	9
LOW DENSITY RESIDENTIAL	5,340
METHOW REVIEW DISTRICT	650
NEIGHBORHOOD USE	2
PLANNED DESTINATION RESORT	1,971
PLANNED UNIT DEVELOPMENT	2,777
RURAL 1	29
RURAL 20	150
RURAL RESIDENTIAL	13,024
SPECIAL REVIEW COMMERCIAL	22
UPLANDS 20	1,040,195
URBAN RESIDENTIAL	38
VALLEY FLOOR	27,233

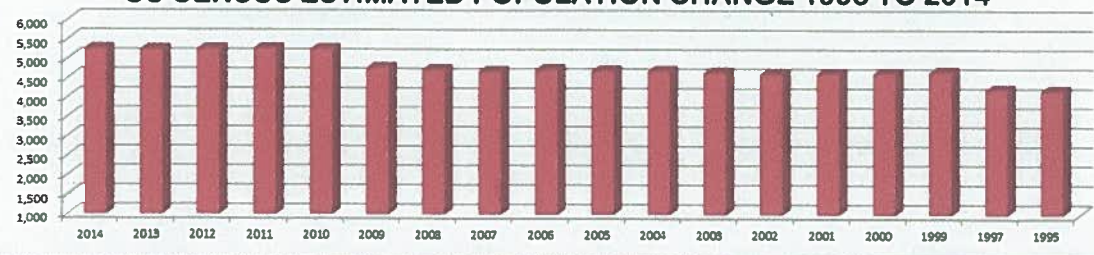
2/23/16

OKANOGAN COUNTY ZONING - DRAFT - 10/16/2015	
SYMBOL, CODE, ZONE	SYMBOL, CODE, ZONE
AD, AIRPORT DEVELOPMENT	MRD VF 5, VALLEY FLOOR
AG, AGRICULTURAL	NC, NEIGHBORHOOD COMMERCIAL
AR, AGRICULTURAL RESIDENTIAL	NU, NEIGHBORHOOD USE
C, COMMERCIAL	PDR, PLANNED DESTINATION RESORT
CITY/TOWN, INCORPORATED CITY/TOWN	PUD, PLANNED UNIT DEVELOPMENT
IW, INDUSTRIAL	R1, RURAL 1
LDR, LOW DENSITY RESIDENTIAL	R20, RURAL 20
METHOW MORE COMPLETELY PLANNED AREA	RS, RURAL 5
MR, MINIMUM REQUIREMENT	RR, RURAL RESIDENTIAL
MRD UL 20, UPLANDS 20	SR, SUBURBAN RESIDENTIAL
MRD VF 1, METHOW REVIEW DISTRICT	SRC, SPECIAL REVIEW COMMERCIAL
MRD VF 12.500, METHOW REVIEW DISTRICT	UR, URBAN RESIDENTIAL

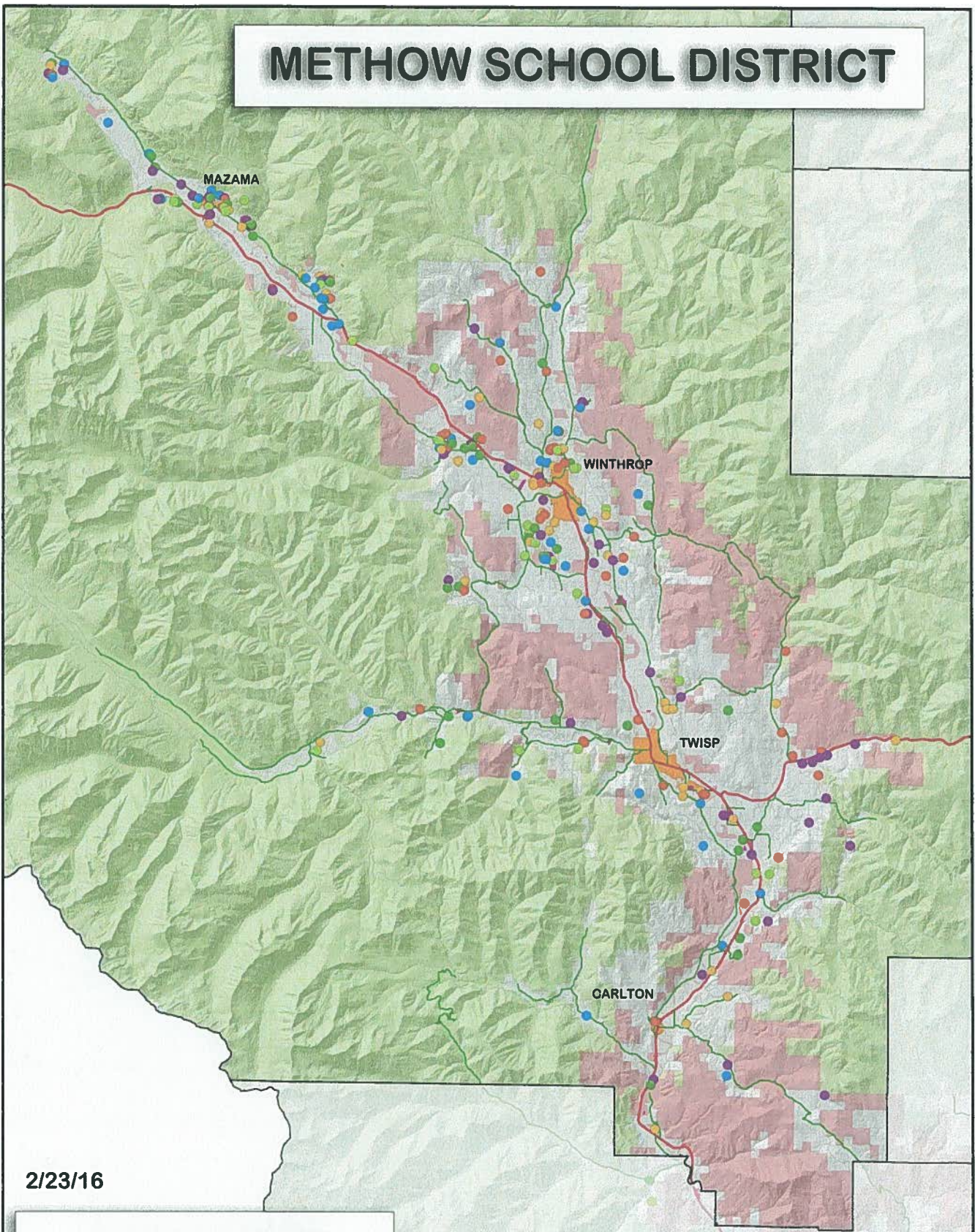
US CENSUS 2010		
COUNTY	3,925	75%
CITY	1,319	25%
DISTRICT	5,244	

CURRENT POPULATION ESTIMATE 5,252

US CENSUS ESTIMATED POPULATION CHANGE 1995 TO 2014

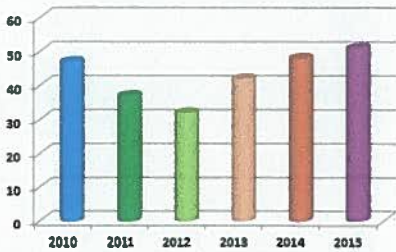


METHOW SCHOOL DISTRICT



2/23/16

**BUILDING PERMITS
2010 TO 2015**



METHOW SCHOOL DISTRICT OWNERSHIP

